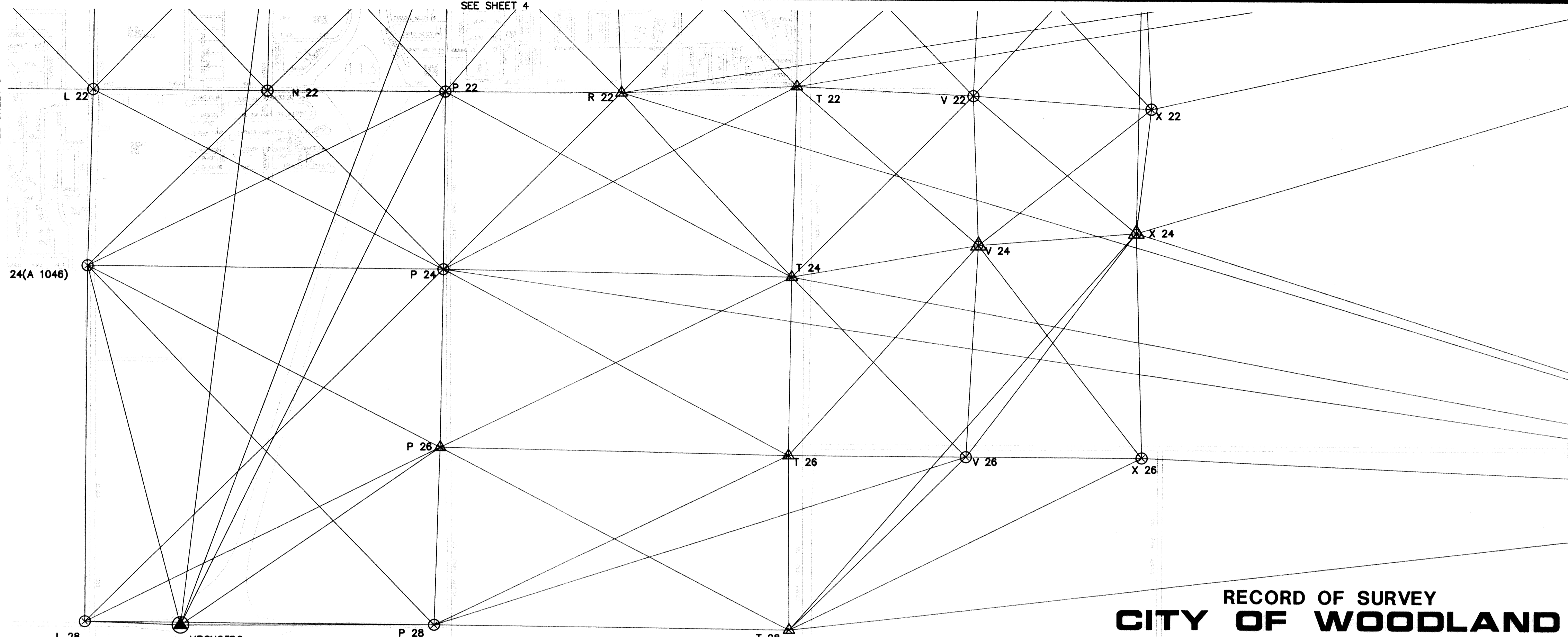


SEE SHEET 4

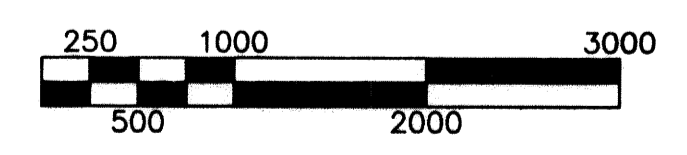
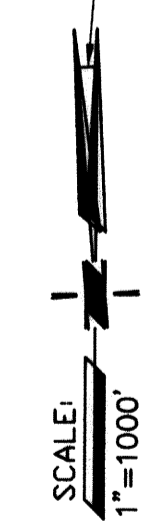
SEE SHEET 3



- LEGEND**
- ▲ EXISTING GPS CONTROL STATIONS
 - EXISTING MONUMENTS SUITABLE FOR GPS OBSERVATION AS NOTED ON SHEET 7
 - △ SET FENO MONUMENT SEE DETAIL "A" SHEET 7
 - ⊙ FOUND CALTRANS MONUMENT AS NOTED ON SHEET 7
 - ⊠ SET 2" BRASS DISK IN CONC. STRUCTURE AS NOTED ON SHEET 7

SEE SHEET 6 FOR COORDINATES
 SEE SHEET 7 FOR MONUMENT DESCRIPTIONS
 STREET LOCATIONS SHOWN ARE APPROXIMATE ONLY

MEAN MAPPING ANGLE(γ)=00°09'20.6"



**RECORD OF SURVEY
 CITY OF WOODLAND
 GEODETIC CONTROL
 SURVEY-2002**
 INCLUDING SECTIONS IN PORTIONS OF
 RANCHO RIO JESUS MARIA;
 T.10 N., R.02 E.; T.09 N., R.02 E.; M.D.M.
 CITY OF WOODLAND
 YOLO COUNTY, CALIFORNIA
 SCALE: 1"=1000' SEPTEMBER 5, 2002

ANDREGG, INC.
 SURVEYING • MAPPING • GEOMATICS
 AUBURN, CALIFORNIA
 (530) 885-7072
 SHEET 5 OF 7

DATE OF GROUND SURVEYS:
 JANUARY-MAY, 2002

HORIZONTAL DATUM:
 NAD83(1999.51)
 CALIFORNIA STATE PLANE COORDINATES ZONE 2

VERTICAL DATUM:
 NAVD88 BASED ON YOLO COUNTY GPS SUBSIDENCE SURVEY

NOTES

- 1) THE COORDINATES SHOWN ON THIS MAP ARE BASED ON THE 1999 YOLO COUNTY GPS SUBSIDENCE SURVEY, A PART OF THE CALIFORNIA HIGH PRECISION GEODETIC NETWORK(HPGN)(EPOCH 1999.51) ADJUSTMENT OF THE NORTH AMERICAN DATUM OF 1983(NAD83). DISTANCES SHOWN ON THIS MAP, OR COMPUTED FROM THE COORDINATES SHOWN HEREON ARE "GRID DISTANCES", AND SHOULD BE CONVERTED TO "GROUND" DISTANCES IN ORDER TO BE COMPATIBLE WITH MEASUREMENTS MADE ON THE GROUND USING CONVENTIONAL SURVEYING TECHNIQUES. TO OBTAIN "GROUND" DISTANCES, DIVIDE THE "GRID" DISTANCE BY THE "COMBINATION FACTOR". TO OBTAIN "GRID" DISTANCES, MULTIPLY THE "GROUND" DISTANCE BY THE "COMBINATION FACTOR". COMBINATION FACTORS FOR EACH POINT ARE INCLUDED IN THE COORDINATE LISTINGS.
- 2) THIS RECORD OF SURVEY IS INTENDED TO BE A MONUMENTATION MAP ONLY. IT DOES NOT DEFINE PROPERTY BOUNDARY LOCATIONS. THE SOLE PURPOSE IS TO ESTABLISH A HORIZONTAL AND VERTICAL CONTROL NETWORK FOR THE CITY OF WOODLAND PUBLIC WORKS DEPARTMENT, CONSTRAINED TO THE CALIFORNIA HIGH PRECISION GEODETIC NETWORK, USING GLOBAL POSITIONING SURVEY TECHNIQUES, AND CONSTRAINED TO NORTH AMERICAN VERTICAL DATUM OF 1988(NAVD88), AND SHOW THE LOCATION AND DESCRIPTION OF MONUMENTS FOUND OR SET, ALONG WITH THE NAD83-1999 STATE PLANE COORDINATES DETERMINED FOR THE MONUMENTS.